
Air Up

Pinuccio Borgonovo
2010



Floor standing modular system with plinth of elements in mink colour leather effect laminated wood. The units (fronts/top/sides) are covered by 6mm tempered painted glass as per samples, in the bright or satin version. The inside is made of leather effect laminated wood in mink colour.

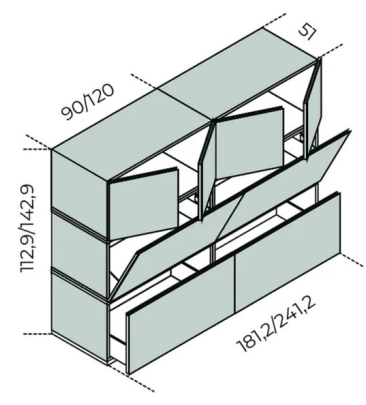
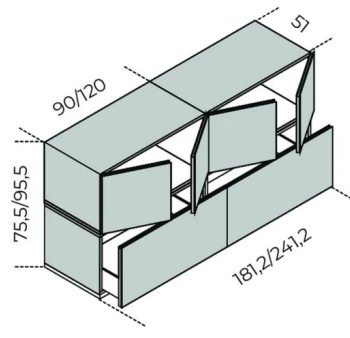
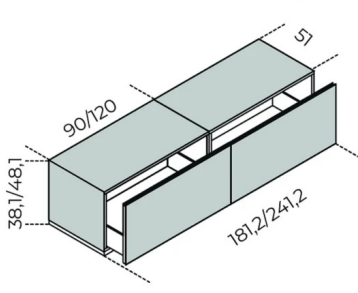
Bright anodised aluminium metal parts. Base and spacers in mink colour leather effect laminated wood. For room divider or double-sided compositions, a 6mm tempered painted glass back in the same finish of the unit is available. Modules can be placed side by side or superimposed. It is recommended to place no more than 3 modules.

Cm (L x P x H)

90 x 51 x 48.1
120 x 51 x 48.1
90 x 42 x 0
120 x 42 x 0
90 x 51 x 38.1
120 x 51 x 38.1
90 x 0 x 0
120 x
90 x 51 x 49
120 x 51 x 49
41.4 x 22.5 x 12.5
45 x 42 x 0
60 x 42 x 0
90 x 48.3 x 0.6
120 x 48.3 x 0.6
51 x 0 x 45.1
51 x 0 x 35.1
90 x 0 x 44.5
120 x 0 x 44.5
90 x 0 x 34.5
120 x 0 x 34.5
8 x 0 x 21
8 x 0 x 8
0 x 0 x 0

Inches (L x P x H)

35½ x 20¾ x 19
47¾ x 20¾ x 19
35½ x 16¾ x 0
47¾ x 16¾ x 0
35½ x 20¾ x 15¼
47¾ x 20¾ x 15¼
35½ x 0 x 0
47¾ x NaN x NaN
35½ x 20¾ x 19½
47¾ x 20¾ x 19½
16½ x 9 x 5
17¾ x 16¾ x 0
23¾ x 16¾ x 0
35½ x 19¾ x ¼
47¾ x 19¾ x ¼
20¾ x 0 x 18
20¾ x 0 x 14
35½ x 0 x 17¾
47¾ x 0 x 17¾
35½ x 0 x 13¾
47¾ x 0 x 13¾
3¾ x 0 x 8½
3¾ x 0 x 3¾
0 x 0 x 0



Finishes

Glass



Bright white



Satin white



Bright blue-grey



Satin blue-grey



Bright cadet blue



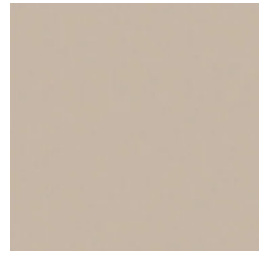
Satin cadet blue



Bright cement



Satin cement



Bright champagne



Satin champagne



Bright rose powder



Satin rose powder



Bright taupe



Satin taupe



Bright dark grey



Satin dark grey



Leather effect laminated wood



Bright liquorice



Satin liquorice



Bright black



Satin black



Bright olive



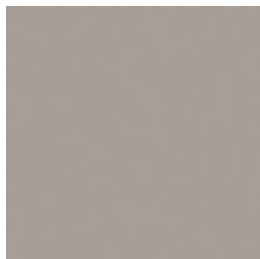
Satin olive



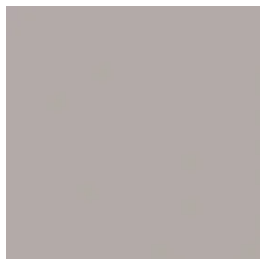
Bright green-grey



Satin green-grey

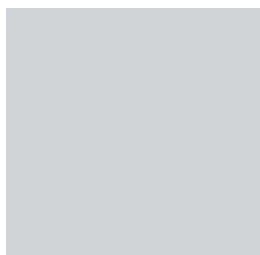


Bright mink



Satin mink

Metal



Anodised aluminium